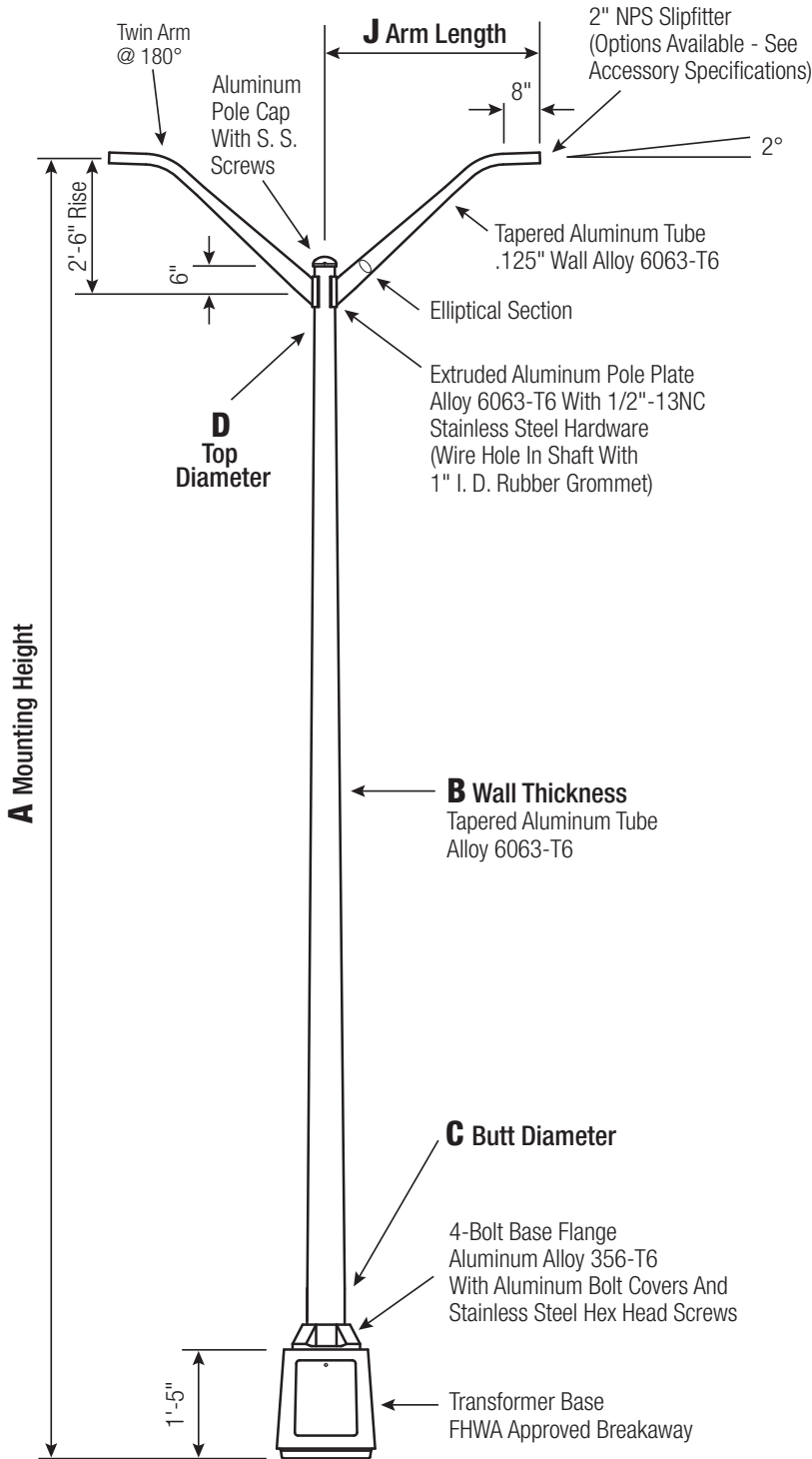


RTA

Round Tapered Aluminum Pole with Arms Double Mast — Breakaway T-Base



Satin Aluminum or Powder Coated Finish per Customer Specification.

C BUTT DIA.	D TOP DIA.	F BOLT CIR. DIA.	G BASE SQ.	H BOLT PROJ.	I BOLT SIZE
7	4.5	12	13.0625	3.5	1 x 36 x 4
8	4.5	15	15.375	3.5	1 x 36 x 4
10	6	15	15.375	3.5	1 x 48 x 4

Dimensions in Inches

Pole

Shaft and arms will be constructed of seamless extruded tube of 6063 Aluminum Alloy per the requirements of ASTM B221. The shaft assembly shall be full-length heat treated after base weld to produce a T6 temper.

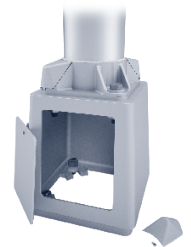
Base Style

Cast Aluminum Transformer Base (T-Base) of Alloy 356-T6 with Aluminum Door and Stainless Steel Hex Head Screw. FHWA Approved Breakaway.



Handhole

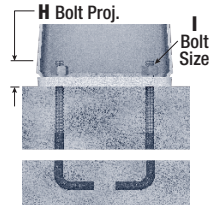
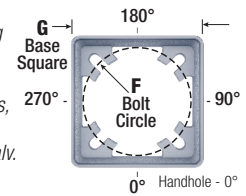
7"-10" Butt Diameters - Tapered Door Opening (9-3/4" W Base x 9-1/4" W Top x 11-3/4" H) with Flush Mount Aluminum Cover and Stainless Steel Hex Head Screw. Grounding Provisions tapped 1/4"-20NC and 1/2"-13NC are provided.



Anchorage

Base Anchorage includes four (4) L-shaped Steel Anchor Bolts conforming to AASHTO M314-90 Grade 55, four (4) each Heavy-Duty Flat Washers, Lock Washers, and Hex Nuts (all components Galv. Steel). Ten inches (10") of threaded end will be galvanized per ASTM A153.

Top Connecting Hardware includes four (4) each 1"-8NC x 3-3/4" Hex Head Bolts, Flat Washers, Heavy-Duty Flat Washers, Lock Washers, and Hex Nuts (all components Galv. Steel). A bolt circle template will be provided.



Vibration Damper

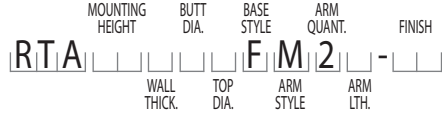
When determined necessary by Hapco, a Vibration Damper will be factory-installed inside the pole shaft. Customer specification of the damper is available.

A Mtg. Hgt.	B WALL THICKNESS	C BUTT DIAMETER	J ARM LENGTH	LUM. WEIGHT	MAXIMUM EPA PER ARM					OLD CAT. NUMBER	CATALOG NUMBER
					90	100	110	120	130		
20	0.156"	7	4'	60	8.8	6.7	6.1	4.8	3.8	24-092	RTA20C7BFM24-**-
20	0.156"	7	6'	60	8.2	6.0	5.4	4.2	3.2	24-095	RTA20C7BFM26-**-
20	0.156"	7	8'	45	6.6	5.3	4.7	3.4	2.5	24-097	RTA20C7BFM28-**-
25	0.156"	7	4'	55	5.6	3.9	3.5	2.6	1.9	24-362	RTA25C7BFM24-**-
25	0.156"	7	6'	45	5.0	3.4	2.9	2.0	1.3	24-365	RTA25C7BFM26-**-
25	0.188"	7	4'	70	7.2	5.3	4.8	3.6	2.8	24-292	RTA25D7BFM24-**-
25	0.188"	7	6'	60	6.6	4.7	4.2	3.0	2.2	24-295	RTA25D7BFM26-**-
25	0.156"	8	6'	60	7.1	5.3	4.7	3.5	2.7	24-375	RTA25C8BFM26-**-
25	0.188"	8	6'	60	8.6	6.8	6.2	5.2	4.1	24-305	RTA25D8BFM26-**-
25	0.188"	8	8'	40	6.4	5.0	4.6	3.8	3.0	24-307	RTA25D8BFM28-**-
30	0.156"	8	4'	45	5.6	3.9	3.4	2.5	1.8	24-642	RTA30C8BFM24-**-
30	0.156"	8	6'	45	4.9	3.3	2.8	1.9	1.2	24-645	RTA30C8BFM26-**-
30	0.156"	8	8'	45	4.2	2.5	2.1	1.1	-	24-647	RTA30C8BFM28-**-
30	0.188"	8	4'	70	7.2	5.3	4.8	3.6	2.7	24-582	RTA30D8BFM24-**-
30	0.188"	8	6'	55	6.8	4.7	4.2	3.0	2.2	24-585	RTA30D8BFM26-**-
30	0.188"	8	8'	45	6.0	4.0	3.5	2.3	1.5	24-587	RTA30D8BFM28-**-
35	0.188"	8	4'	45	4.8	3.3	2.8	1.9	1.3	24-862	RTA35D8BFM24-**-
35	0.188"	8	6'	45	4.2	2.6	2.2	1.3	-	24-865	RTA35D8BFM26-**-
35	0.188"	8	8'	45	3.5	1.9	1.5	-	-	24-867	RTA35D8BFM28-**-
35	0.219"	8	6'	45	5.2	3.4	3.0	2.0	1.2	24-875	RTA35E8BFM26-**-
35	0.250"	8	8'	40	4.6	2.8	2.2	1.2	-	24-887	RTA35F8BFM28-**-
35	0.188"	10	4'	60	9.2	7.4	6.6	5.2	4.0	24-942	RTA35D1CFM24-**-
35	0.188"	10	6'	60	7.8	6.2	5.8	5.1	3.9	24-945	RTA35D1CFM26-**-
35	0.188"	10	8'	45	5.8	4.4	4.2	3.4	2.8	24-947	RTA35D1CFM28-**-
35	0.219"	10	6'	60	7.8	6.2	5.8	4.8	4.0	24-955	RTA35E1CFM26-**-
35	0.250"	10	8'	40	5.8	4.6	4.2	3.4	2.8	24-967	RTA35F1CFM28-**-
40	0.188"	8	4'	45	2.7	1.5	1.2	-	-	50703-041	RTA40D8BFM24-**-
40	0.188"	8	6'	40	2.1	0.9	-	-	-	50703-001	RTA40D8BFM26-**-
40	0.188"	8	8'	45	1.3	-	-	-	-	50703-002	RTA40D8BFM28-**-
40	0.219"	8	6'	55	3.2	1.8	1.4	-	-	50703-005	RTA40E8BFM26-**-
40	0.250"	8	8'	40	2.4	1.0	-	-	-	50703-010	RTA40F8BFM28-**-
40	0.188"	10	4'	60	6.9	5.0	4.4	3.2	2.3	50703-047	RTA40D1CFM24-**-
40	0.188"	10	6'	55	6.8	5.0	4.4	3.2	2.3	50703-013	RTA40D1CFM26-**-
40	0.188"	10	8'	45	5.6	4.2	3.7	2.5	1.6	50703-014	RTA40D1CFM28-**-
40	0.219"	10	6'	40	8.0	5.8	5.2	4.0	2.8	50703-015	RTA40E1CFM26-**-
40	0.250"	10	8'	40	5.6	4.4	4.0	3.2	2.2	50703-018	RTA40F1CFM28-**-
45	0.188"	8	4'	45	1.2	-	-	-	-		RTA45D8BFM24-**-
45	0.219"	8	6'	60	1.5	-	-	-	-		RTA45E8BFM26-**-
45	0.188"	10	4'	40	4.7	3.2	2.8	1.8	1.0		RTA45D1CFM24-**-
45	0.188"	10	6'	40	4.6	3.1	2.7	1.8	1.0		RTA45D1CFM26-**-
45	0.188"	10	8'	40	3.8	2.4	2.0	1.0	-		RTA45D1CFM28-**-
45	0.219"	10	6'	60	5.6	3.8	3.4	2.4	1.6		RTA45E1CFM26-**-
45	0.250"	10	8'	40	4.8	3.2	2.6	1.6	-		RTA45F1CFM28-**-



Catalog Number System

The catalog number for Hapco poles utilizes the following identification system.



Catalog Number Example -

RTA 30 D 8 B F M 26 - 01
 Round Tapered Aluminum, 30' Mounting Height, .188" Wall Thickness, 8" Butt Diameter, 4.5" Top Diameter, Breakaway T-Base, Mast Arm, Double, 6' Arm Length, Satin Aluminum Finish.

Wall Thickness

- C = .156"
- D = .188"
- E = .219"
- F = .250"

Butt Diameter

- 7 = 7"
- 8 = 8"
- 1 = 10"

Top Diameter

- B = 4.5"
- C = 6"

Base Style

F = Breakaway T-Base

Arm Style

M = Mast

Arm Quantity

2 = Double

Arm Length

- 4 = 4'
- 6 = 6'
- 8 = 8'

Finish

- O1 = Satin Aluminum
- BA = Black Powder Coat
- BH = White Powder Coat
- BM = Dark Bronze Powder Coat
- BV = Dark Green Powder Coat
- GC = Gray Powder Coat
- ** = Specify Finish

EPA Notes:

Effective Projected Area (EPA) in square feet. EPA's calculated using wind velocity (mph) indicated in accordance with 2009 AASHTO LTS-5 using a 25 year design life. Maximum EPA is based on the luminaire weight shown. Increased luminaire weight may reduce the maximum EPA. If weight is exceeded, or if other design life or code is required, please consult the factory.