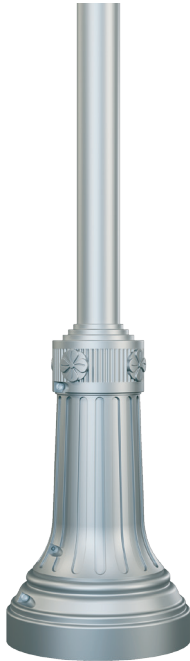


# YORK 17

## Clamshell Base

### Round Shaft



#### SR - Straight Round



BUTT DIA.	MOUNTING HGT.
4"	Up To 25'
5"	Up To 30'
6"	Up To 40'

#### TR - Tapered Round



BUTT DIA.	MOUNTING HGT.
4"	Up To 25'
5"	Up To 30'
6"	Up To 40'

### Fluted Shaft



#### SF - Straight Fluted



BUTT DIA.	MOUNTING HGT.
4"	Up To 25'
5"	Up To 30'
6"	Up To 40'

#### TF - Tapered Fluted



BUTT DIA.	MOUNTING HGT. TF-12	MOUNTING HGT. TF-16
5"	Up To 14'	Up To 14'
6"	Up To 20'	Up To 20'

Product Code: Y7C

Base Diameter: 17"

Base Height: 2'-5"

Butt Diameters: 4", 5", 6"

Mounting Heights: Up to 40'

Construction: Aluminum Alloy 356

