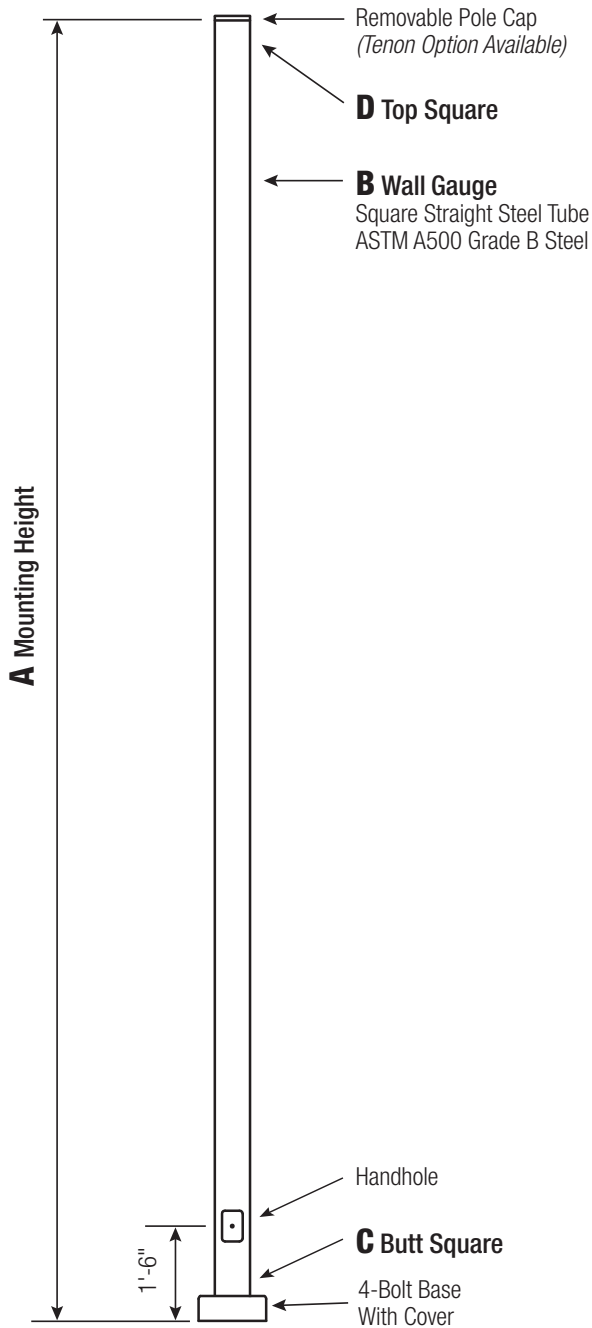


# SSS

## Square Straight Steel Pole No Arm — 4-Bolt Base



Powder Coated, Galvanized or Powder Coated over Galvanized Finish Per Customer Specification.

C BUTT SQ.	D TOP SQ.	F BOLT CIR. DIA.	G BASE SQ.	H BOLT PROJ.	I BOLT SIZE
4 (11 Gauge)	4	8 - 9	8	3.75	.75 x 17 x 3
4 (7 Gauge)	4	8 - 9	8	3.75	.75 x 30 x 3
5	5	10 - 12	11	4.875	1 x 36 x 4
6	6	11 - 13	12.5	4.875	1 x 36 x 4

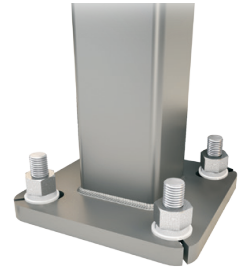
Dimensions in Inches

### Pole

Pole shaft shall be weldable-grade, cold-rolled, commercial quality carbon steel tubing conforming to ASTM A500 Grade B. Options include 11 gauge and 7 gauge. All welds shall conform to AWS D1.2 using ER70S-6 electrodes.

### Base Style

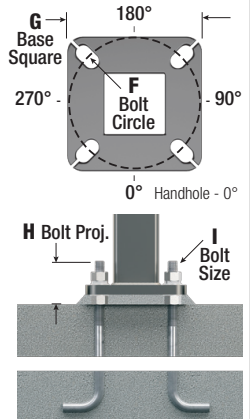
4-Bolt Steel Plate Base Flange of fabricated hot rolled carbon steel conforming to ASTM A36 or equivalent (36 ksi minimum yield) with 2-piece Base Cover and attaching hardware.



### Anchorage

Anchorage Kit will include four (4) L-shaped Steel Anchor Bolts conforming to AASHTO M314-90 Grade 55. Ten inches (10") of threaded end will be galvanized per ASTM A153.

Kits will contain eight (8) Hex Nuts, four (4) Lock Washers, and eight (8) Flat Washers (all components Galvanized Steel). A paper bolt circle template will be provided.



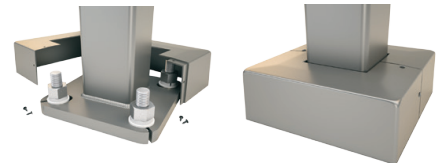
### Handhole

Reinforced, 3" x 5" Handhole with cover, stainless steel screw and backbar. A grounding provision incorporating a tapped 1/2"-13NC hole will be provided.



### Base Cover

Square ABS plastic Base Covers are standard on all SSS poles specified in BA-Black, BM-Dark Bronze and BH-White. SSS poles specified in all other colors will be manufactured of metal materials. Custom specification of SSS square metal style Base Covers in BA, BM and BH powder coated finishes is available.



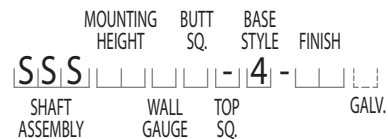
### Vibration Damper

If determined necessary by Hapco, a top-mount, field installed First Mode Vibration Damper will be provided. Customer specification of the damper is available.

A Mtg. Hgt.	B Wall Gauge	C Butt Sq.	TOTAL Lum. Weight	MAXIMUM EPA						CATALOG NUMBER
				90	100	110	120	130	140	
10	11	4	320	25.2	20.0	18.6	15.3	12.7	10.6	SSS10B4-4**
12	11	4	285	20.6	16.2	14.9	12.1	9.9	8.2	SSS12B4-4**
14	11	4	255	17.0	13.2	12.1	9.7	7.8	6.3	SSS14B4-4**
15	11	4	245	15.5	11.9	10.9	8.6	6.8	5.4	SSS15B4-4**
15	7	4	305	23.4	18.4	17.0	13.8	11.4	9.4	SSS15D4-4**
16	11	4	235	14.0	10.7	9.7	7.6	5.9	4.6	SSS16B4-4**
16	7	4	290	21.5	16.8	15.5	12.5	10.2	8.4	SSS16D4-4**
18	11	4	215	11.3	8.4	7.6	5.7	4.3	3.2	SSS18B4-4**
18	7	4	265	18.0	13.9	12.8	10.2	8.2	6.6	SSS18D4-4**
20	11	4	200	9.1	6.5	5.8	4.2	2.9	1.9	SSS20B4-4**
20	11	5	235	14.1	10.3	9.2	6.8	4.9	3.4	SSS20B5-4**
20	7	4	240	15.1	11.5	10.5	8.2	6.5	5.0	SSS20D4-4**
20	7	5	330	26.3	20.3	18.6	14.8	11.9	9.6	SSS20D5-4**
22	11	4	200	7.2	4.9	4.2	2.8	1.7	0.8	SSS22B4-4**
22	11	5	215	11.4	8.0	7.1	4.9	3.2	1.9	SSS22B5-4**
22	7	4	225	12.7	9.5	8.6	6.6	5.0	3.7	SSS22D4-4**
22	7	5	300	22.4	17.1	15.6	12.2	9.6	7.5	SSS22D5-4**
25	11	4	200	4.7	2.8	2.2	1.0	-	-	SSS25B4-4**
25	11	5	200	8.0	5.1	4.3	2.4	1.0	-	SSS25B5-4**
25	7	4	205	9.7	6.9	6.2	4.4	3.1	2.0	SSS25D4-4**
25	7	5	260	17.7	13.2	11.9	9.0	6.7	4.9	SSS25D5-4**
28	11	4	200	2.6	1.0	-	-	-	-	SSS28B4-4**
28	11	5	200	5.1	2.6	1.9	-	-	-	SSS28B5-4**
28	7	4	200	7.1	4.8	4.1	2.6	1.5	-	SSS28D4-4**
28	7	5	235	13.9	9.9	8.8	6.3	4.3	2.7	SSS28D5-4**
30	11	5	200	3.4	1.1	-	-	-	-	SSS30B5-4**
30	7	4	200	5.6	3.5	2.9	1.6	-	-	SSS30D4-4**
30	7	5	215	11.7	8.0	7.0	4.7	2.9	1.5	SSS30D5-4**
30	7	6	275	19.2	13.7	12.2	8.7	5.9	3.8	SSS30D6-4**
35	7	5	200	6.9	4.0	3.1	1.2	-	-	SSS35D5-4**
35	7	6	220	12.6	8.0	6.8	3.9	1.6	-	SSS35D6-4**
39	7	6	200	8.2	4.2	3.1	0.6	-	-	SSS39D6-4**

**Catalog Number System**

The catalog number for Hapco poles utilizes the following identification system.



**Catalog Number Example -**

**SSS 20 D 5 - 4 - BA**

Square Straight Steel, 20' Mounting Height, 7 Gauge, 5" Butt Square, No Taper, 4-Bolt Base, Black Powder Coat Finish.

**EPA Notes:**

Effective Projected Area (EPA) in square feet. EPA's calculated using wind velocity (mph) indicated in accordance with 2009 AASHTO LTS-5 using a 25-year design life. Maximum EPA is based on the luminaire weight shown. Increased luminaire weight may reduce the maximum EPA. If weight is exceeded, or if other design life or code is required, please consult the factory.

**Mounting Options**

**Side Drill Mount**

Includes removable pole cap.  
NOTE: A luminaire drilling template must be supplied at time of order.

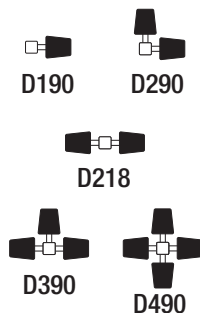


**Tenon Mount**

For Tenon Mount applications specify both Tenon diameter and length.



**Drill Mount Options**

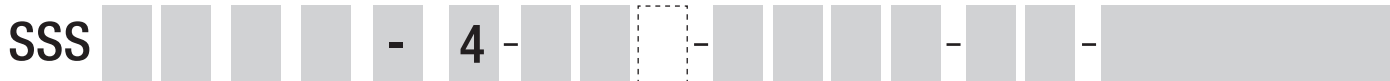
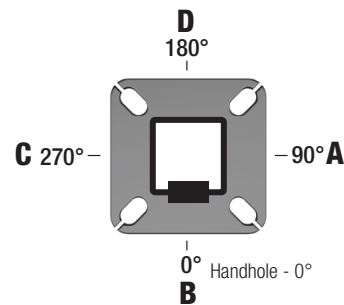


**Electrical Box**



Note: GFI Options must be specified in Accessories.

**Pole Orientation**



SSS- SQUARE STRAIGHT STEEL POLE	HEIGHT	GAUGE	BUTT Sq.	TOP Sq.	BASE STYLE	FINISH	MOUNTING OPTIONS	ELECTRICAL BOX*	ACCESSORIES/OPTIONS*
		10 = 10' 12 = 12' 14 = 14' 16 = 16' 18 = 18' 20 = 20' 22 = 22' 25 = 25' 28 = 28' 30 = 30' 35 = 35' 39 = 39'	B = 11 Gauge D = 7 Gauge	4 = 4" 5 = 5" 6 = 6"	"-" = No Taper	4 = 4-Bolt Base	<b>POWDER COAT COLORS</b> BA - Black Powder Coat BH - White Powder Coat BM - Dark Bronze Powder Coat BV - Dark Green Powder Coat GC - Gray Powder Coat SC - Special Colors* <b>GALVANIZED</b> OOG - Galvanized Only BAG - Black PC Over Galv. BHG - White PC Over Galv. BMG - D. Bronze PC Over Galv. BVG - D. Green PC Over Galv. GCG - Gray PC Over Galv. SCG - Special PC Over Galv.*	<b>DRILL MOUNT</b> D000 - No Drilling D190 - Std. "A" D290 - Std. "A" & "D" D218 - Std. "A" & "C" D390 - Std. "A", "D", & "C" D490 - Std. "A", "B", "C", & "D" DCUS - Custom* <b>TENON</b> T204 - 2-3/8" O.D. x 4" T304 - 2-7/8" O.D. x 4" T356 - 3-1/2" O.D. x 6" T406 - 4" O.D. x 6" TCUS - Custom Tenon**	FA - 30" Up, "D" FB - 30" Up, "B" FC - 30" Up, "A" FD - 30" Up, "C" FE - 36" Up, "D" FF - 36" Up, "B" FG - 36" Up, "A" FH - 36" Up, "C" FI - 24" Up, "D" FK - 24" Up, "A" FL - 24" Up, "C" FZ - Custom**

\* Provide RAL # or Sample Color Chip

\*\* Specify Number and Orientation

\* GFI Receptacle Options Available (Specify in Accessories)

\*\* Specify Height and Orientation

\* Add all that apply (Example: CPL-LAB-VDA)  
\*\* Specify Location