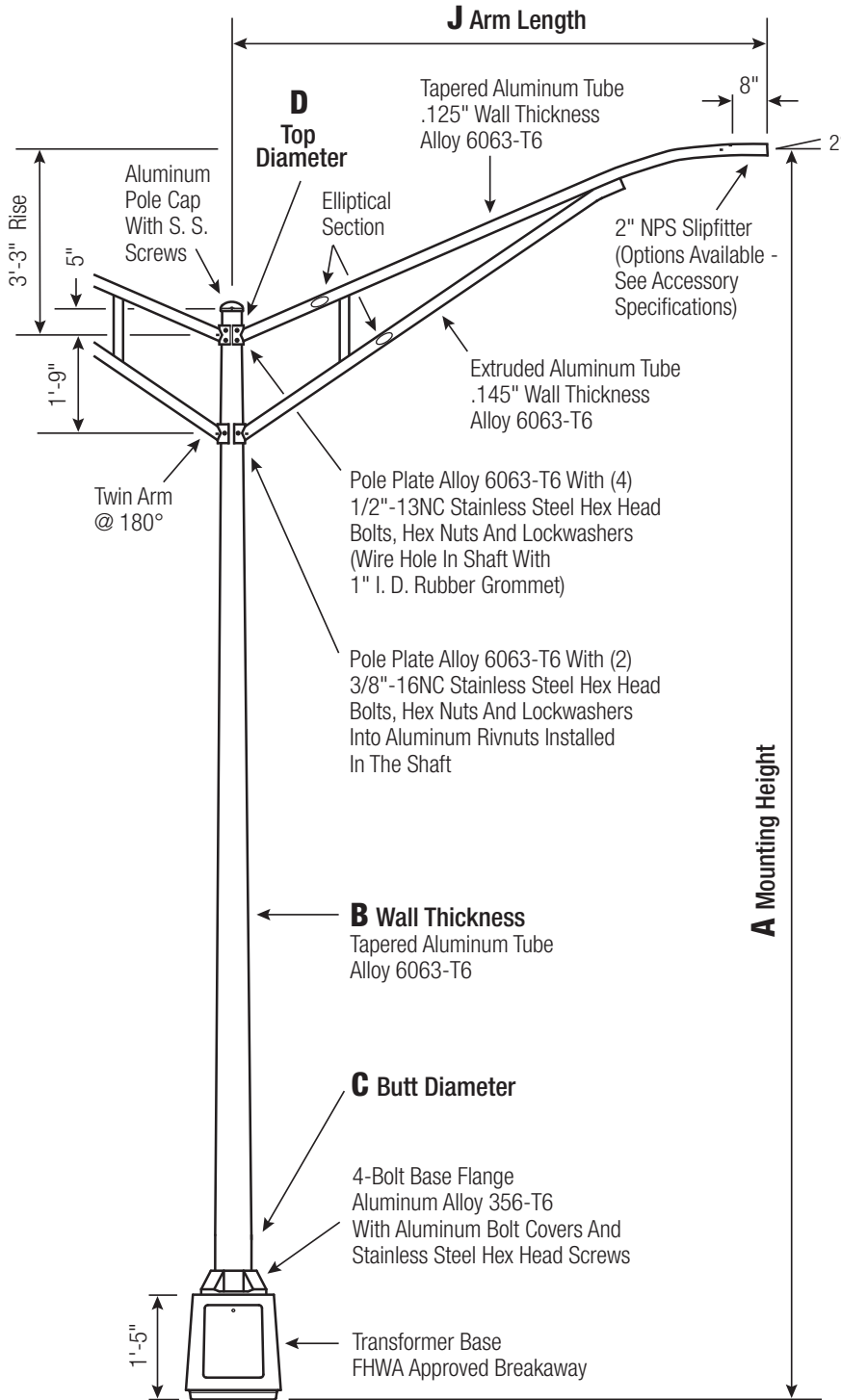


RTA

Round Tapered Aluminum Pole with Arms Double Truss — Breakaway T-Base



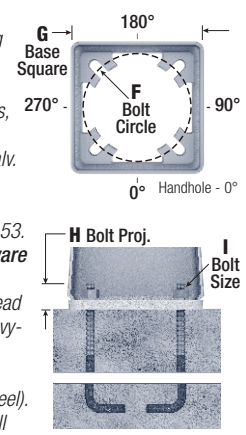
Satin Aluminum or Powder Coated Finish per Customer Specification.

Pole
Shaft and arms will be constructed of seamless extruded tube of 6063 Aluminum Alloy per the requirements of ASTM B221. The shaft assembly shall be full-length heat treated after base weld to produce a T6 temper.

Base Style
Cast Aluminum Transformer Base (T-Base) of Alloy 356-T6 with Aluminum Door and Stainless Steel Hex Head Screw. FHWA Approved Breakaway.

Handhole
7"-10" Butt Diameters - Tapered Door Opening (9-3/4" W Base x 9-1/4" W Top x 11-3/4" H) with Flush Mount Aluminum Cover and Stainless Steel Hex Head Screw. Grounding Provisions tapped 1/4"-20NC and 1/2"-13NC are provided.

Anchorage
Base Anchorage includes four (4) L-shaped Steel Anchor Bolts conforming to AASHTO M314-90 Grade 55, four (4) each Heavy-Duty Flat Washers, Lock Washers, and Hex Nuts (all components Galv. Steel). Ten inches (10") of threaded end will be galvanized per ASTM A153.
Top Connecting Hardware includes four (4) each 1"-8NC x 3-3/4" Hex Head Bolts, Flat Washers, Heavy-Duty Flat Washers, Lock Washers, and Hex Nuts (all components Galv. Steel). A bolt circle template will be provided.

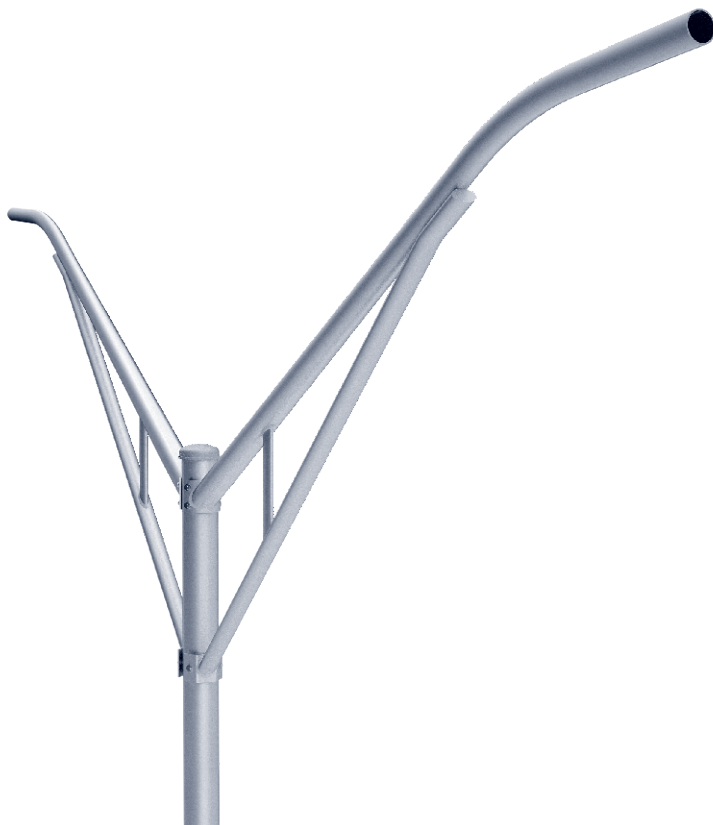


Vibration Damper
When determined necessary by Hapco, a Vibration Damper will be factory-installed inside the pole shaft. Customer specification of the damper is available.

C BUTT DIA.	D TOP DIA.	F BOLT CIR. DIA.	G BASE SQ.	H BOLT PROJ.	I BOLT SIZE
7	4.5	12	13.0625	3.5	1 x 36 x 4
8	4.5 and 6	15	15.375	3.5	1 x 36 x 4
10 Up To .250"	6	15	15.375	3.5	1 x 48 x 4
10 .312"	6	17.25	17.4375	3.5	1.25 x 48 x 6

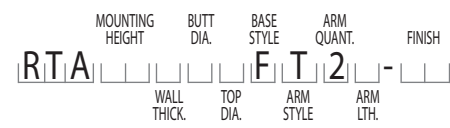
Dimensions in Inches

A Mtg. Hgt.	B Wall Thickness	C Butt Diameter	J Arm Length	Lum. Weight	Maximum EPA Per Arm					Old Cat. Number	Catalog Number
					90	100	110	120	130		
25	0.188"	7	8'	55	4.9	3.8	3.4	2.8	2.1	34-181	RTA25D7BFT28-**
25	0.156"	8	10'	40	3.6	2.6	2.4	1.8	1.4	34-280	RTA25C8BFT2A-**
25	0.188"	8	8'	40	5.0	3.8	3.4	2.8	2.2	34-195	RTA25D8BFT28-**
25	0.188"	8	10'	40	3.6	2.6	2.4	1.8	1.4	34-198	RTA25D8BFT2A-**
25	0.188"	8	12'	40	3.8	2.8	2.4	1.8	1.4	34-199	RTA25D8BFT2C-**
25	0.188"	8	15'	40	2.8	1.8	1.6	1.0	-	34-202	RTA25D8BFT2E-**
25	0.219"	8	12'	40	3.8	2.8	2.4	1.8	1.4	34-212	RTA25E8BFT2C-**
25	0.219"	8	15'	40	2.8	1.8	1.6	1.0	0.6	34-251	RTA25E8CFT2E-**
30	0.188"	8	8'	55	4.6	3.6	3.2	2.6	2.0	34-529	RTA30D8BFT28-**
30	0.188"	8	10'	45	3.4	2.6	2.2	1.7	1.2	34-532	RTA30D8BFT2A-**
30	0.219"	8	12'	45	3.6	2.6	2.4	1.7	1.2	34-547	RTA30E8BFT2C-**
30	0.250"	8	8'	40	4.7	3.6	3.2	2.6	2.0	34-555	RTA30F8BFT28-**
30	0.250"	8	10'	40	3.4	2.6	2.2	1.7	1.2	34-558	RTA30F8BFT2A-**
30	0.250"	8	12'	40	3.6	2.6	2.4	1.7	1.2	34-559	RTA30F8BFT2C-**
30	0.250"	8	15'	40	2.6	1.7	1.4	1.0	-	34-562	RTA30F8BFT2E-**
30	0.188"	10	15'	40	2.6	1.7	1.4	1.0	0.6	34-635	RTA30D1CFT2E-**
35	0.250"	8	8'	40	4.6	3.4	2.8	1.8	1.0	34-877	RTA35F8BFT28-**
35	0.250"	8	10'	40	3.2	2.4	2.2	1.4	-	34-881	RTA35D8BFT2A-**
35	0.188"	10	8'	40	4.6	3.4	3.2	2.4	2.0	34-951	RTA35D1CFT28-**
35	0.188"	10	12'	40	3.4	2.4	2.2	1.6	1.2	34-955	RTA35D1CFT2C-**
35	0.188"	10	15'	40	2.4	1.6	1.4	0.8	-	34-959	RTA35D1CFT2E-**
35	0.219"	10	10'	40	3.2	2.4	2.2	1.6	1.2	34-966	RTA35E1CFT2A-**
35	0.250"	10	12'	40	3.4	2.4	2.2	1.6	1.2	34-981	RTA35F1CFT2C-**
35	0.250"	10	15'	40	2.4	1.6	1.4	0.8	0.4	34-983	RTA35F1CFT2E-**
40	0.250"	8	8'	45	3.2	1.6	1.2	-	-	50707-053	RTA40F8BFT28-**
40	0.250"	8	10'	40	2.4	1.2	-	-	-	50707-045	RTA40F8CFT2A-**
40	0.188"	10	10'	40	3.2	2.3	2.0	1.6	1.1	50707-085	RTA40D1CFT2A-**
40	0.188"	10	12'	40	3.2	2.4	2.1	1.5	1.0	50707-086	RTA40D1CFT2C-**
40	0.250"	10	8'	40	4.4	3.4	3.0	2.4	1.8	50707-107	RTA40F1CFT28-**
40	0.250"	10	10'	40	3.2	2.3	2.0	1.6	1.1	50707-111	RTA40F1CFT2A-**
40	0.250"	10	12'	40	3.2	2.4	2.1	1.5	1.0	50707-114	RTA40F1CFT2C-**
40	0.250"	10	15'	40	2.3	1.5	1.3	0.8	-	50707-116	RTA40F1CFT2E-**
45	0.250"	8	8'	40	1.4	-	-	-	-		RTA45F8BFT28-**
45	0.188"	10	10'	40	3.0	2.2	2.0	1.1	-		RTA45D1CFT2A-**
45	0.188"	10	12'	55	3.2	2.0	1.6	-	-		RTA45D1CFT2C-**
45	0.250"	10	8'	40	4.2	3.2	3.0	2.2	1.4		RTA45F1CFT28-**
45	0.250"	10	10'	40	3.0	2.2	2.0	1.4	1.0		RTA45F1CFT2A-**
45	0.250"	10	12'	40	3.2	2.2	2.0	1.4	-		RTA45F1CFT2C-**
45	0.250"	10	15'	40	2.2	1.4	1.2	-	-		RTA45F1CFT2E-**
45	0.312"	10	12'	40	3.2	2.2	2.0	1.4	0.4		RTA45G1CFT2C-**
45	0.312"	10	15'	40	2.2	1.4	1.2	0.6	-		RTA45G1CFT2E-**



Catalog Number System

The catalog number for Hapco poles utilizes the following identification system.



Catalog Number Example -

RTA 30 D 8 B F T 2 A - 01

Round Tapered Aluminum, 30' Mounting Height, .188" Wall Thickness, 8" Butt Diameter, 4.5" Top Diameter, Breakaway T-Base, Truss Arm, Double, 10" Arm Length, Satin Aluminum Finish.

Wall Thickness

- C = .156"
- D = .188"
- E = .219"
- F = .250"
- G = .312"

Butt Diameter

- 7 = 7"
- 8 = 8"
- 1 = 10"

Top Diameter

- B = 4.5"
- C = 6"

Base Style

- F = Breakaway T-Base

Arm Style

- T = Truss

Arm Quantity

- 2 = Double

Arm Length

- 8 = 8'
- A = 10'
- C = 12'
- E = 15'

Finish

- O1 = Satin Aluminum
- BA = Black Powder Coat
- BH = White Powder Coat
- BM = Dark Bronze Powder Coat
- BV = Dark Green Powder Coat
- GC = Gray Powder Coat
- ** = Specify Finish

EPA Notes:

Effective Projected Area (EPA) in square feet. EPA's calculated using wind velocity (mph) indicated in accordance with 2009 AASHTO LTS-5 using a 25 year design life. Maximum EPA is based on the luminaire weight shown. Increased luminaire weight may reduce the maximum EPA. If weight is exceeded, or if other design life or code is required, please consult the factory.