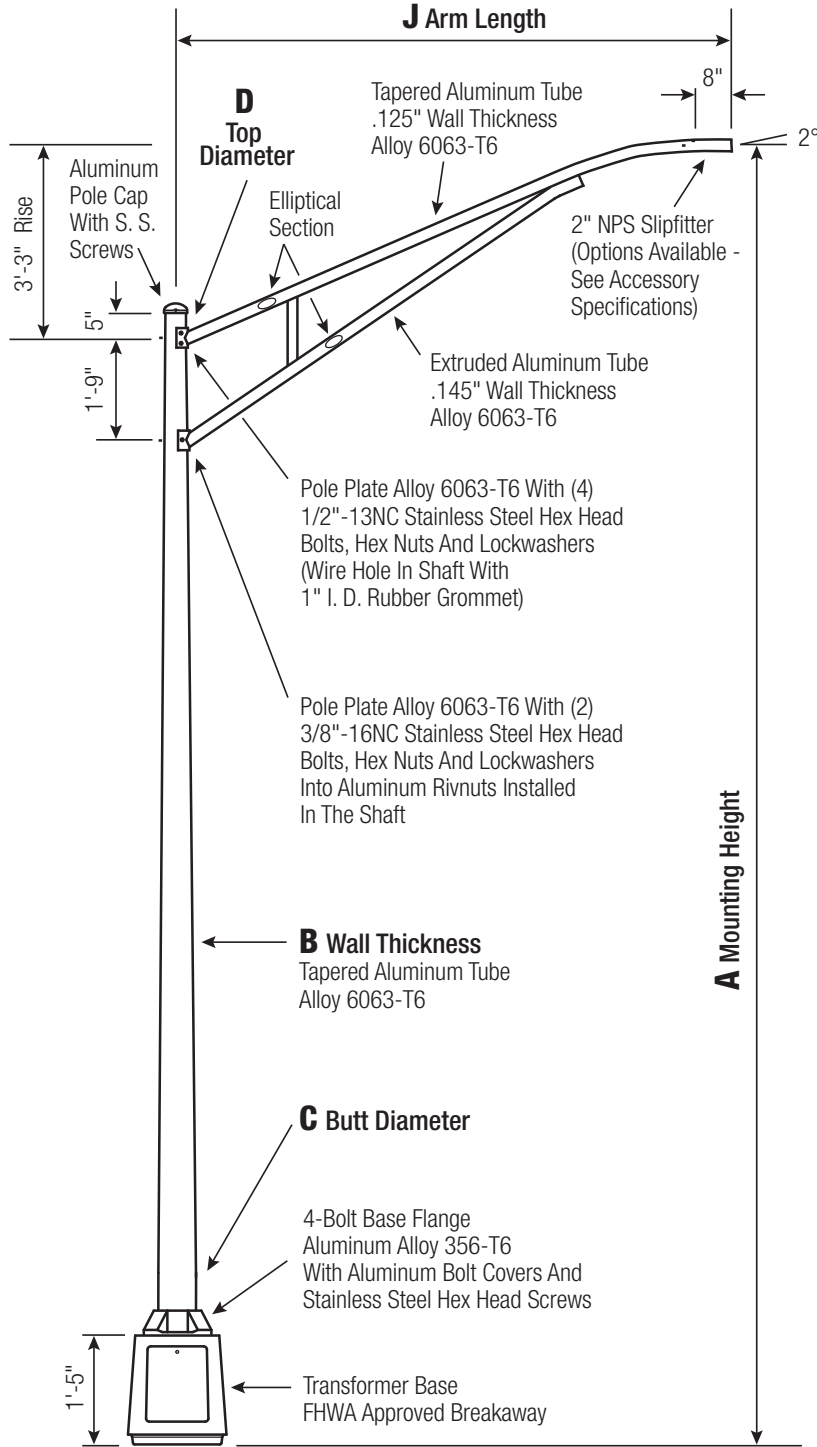


RTA

Round Tapered Aluminum Pole with Arms Single Truss — Breakaway T-Base



Satin Aluminum or Powder Coated Finish per Customer Specification.

C BUTT DIA.	D TOP DIA.	F BOLT CIR. DIA.	G BASE SQ.	H BOLT PROJ.	I BOLT SIZE
7	4.5	12	13.0625	3.5	1 x 36 x 4
8	4.5 and 6	15	15.375	3.5	1 x 36 x 4
10	6	15	15.375	3.5	1 x 48 x 4

Dimensions in Inches

Pole

Shaft and arm will be constructed of seamless extruded tube of 6063 Aluminum Alloy per the requirements of ASTM B221. The shaft assembly shall be full-length heat treated after base weld to produce a T6 temper.

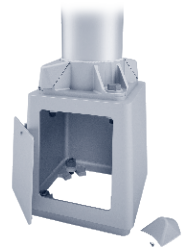
Base Style

Cast Aluminum Transformer Base (T-Base) of Alloy 356-T6 with Aluminum Door and Stainless Steel Hex Head Screw. FHWA Approved Breakaway.



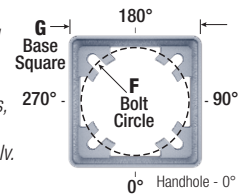
Handhole

7"-10" Butt Diameters - Tapered Door Opening (9-3/4" W Base x 9-1/4" W Top x 11-3/4" H) with Flush Mount Aluminum Cover and Stainless Steel Hex Head Screw. Grounding Provisions tapped 1/4"-20NC and 1/2"-13NC are provided.

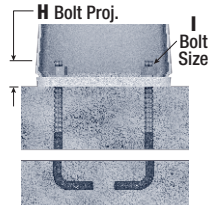


Anchorage

Base Anchorage includes four (4) L-shaped Steel Anchor Bolts conforming to AASHTO M314-90 Grade 55, four (4) each Heavy-Duty Flat Washers, Lock Washers, and Hex Nuts (all components Galv. Steel). Ten inches (10") of threaded end will be galvanized per ASTM A153.



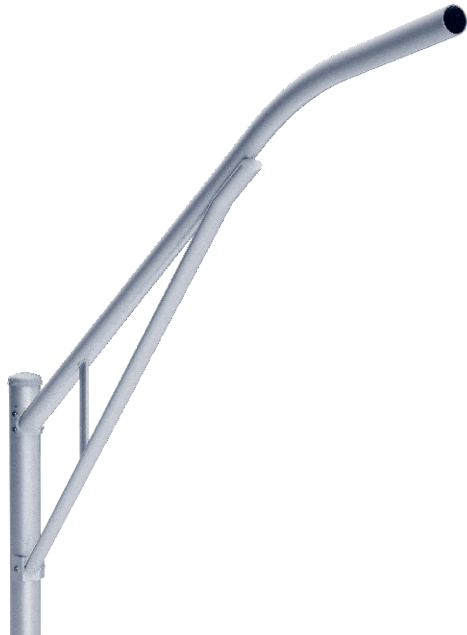
Top Connecting Hardware includes four (4) each 1"-8NC x 3-3/4" Hex Head Bolts, Flat Washers, Heavy-Duty Flat Washers, Lock Washers, and Hex Nuts (all components Galv. Steel). A bolt circle template will be provided.



Vibration Damper

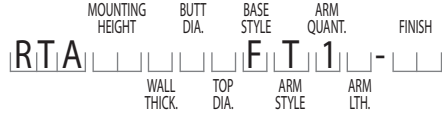
When determined necessary by Hapco, a Vibration Damper will be factory-installed inside the pole shaft. Customer specification of the damper is available.

A Mtg. Hgt.	B WALL THICKNESS	C BUTT DIAMETER	J ARM LENGTH	LUM. WEIGHT	MAXIMUM EPA					OLD CAT. NUMBER	CATALOG NUMBER
					90	100	110	120	130		
25	0.125"	7	8'	40	5.0	3.8	3.4	2.8	2.2		RTA25B7BFT18-**-
25	0.156"	7	8'	60	4.9	3.8	3.4	2.7	2.2	33-265	RTA25C7BFT18-**-
25	0.156"	7	10'	40	3.6	2.6	2.4	1.8	1.4	33-268	RTA25C7BFT1A-**-
25	0.188"	7	8'	60	4.9	3.8	3.4	2.7	2.2	33-181	RTA25D7BFT18-**-
25	0.188"	7	10'	40	3.6	2.6	2.4	1.8	1.4	33-184	RTA25D7BFT1A-**-
25	0.188"	7	12'	40	3.8	2.8	2.4	1.8	1.4	33-187	RTA25D7BFT1C-**-
25	0.188"	8	8'	60	4.9	3.8	3.4	2.7	2.2	33-195	RTA25D8BFT18-**-
25	0.188"	8	10'	40	3.6	2.6	2.4	1.8	1.4	33-198	RTA25D8BFT1A-**-
25	0.188"	8	12'	40	3.8	2.8	2.4	1.8	1.4	33-199	RTA25D8BFT1C-**-
25	0.188"	8	12'	40	3.8	2.8	2.4	1.8	1.4	33-237	RTA25D8CFT1C-**-
25	0.188"	8	15'	40	2.8	1.8	1.6	1.0	0.6	33-239	RTA25D8CFT1E-**-
25	0.219"	8	15'	40	2.8	1.8	1.6	1.0	0.6	33-214	RTA25E8BFT1E-**-
30	0.156"	8	8'	40	4.7	3.6	3.2	2.6	2.0	33-601	RTA30C8BFT18-**-
30	0.156"	8	10'	40	3.4	2.6	2.2	1.7	1.2	33-604	RTA30C8BFT1A-**-
30	0.156"	8	10'	40	3.4	2.6	2.2	1.7	1.2		RTA30C8CFT1A-**-
30	0.156"	8	12'	40	3.6	2.6	2.3	1.7	1.2	33-619	RTA30C8CFT1C-**-
30	0.156"	8	15'	40	2.6	1.7	1.4	1.0	0.6	33-623	RTA30C8CFT1E-**-
30	0.188"	8	8'	60	4.6	3.6	3.2	2.6	2.0	33-529	RTA30D8BFT18-**-
30	0.188"	8	8'	60	4.6	3.6	3.2	2.6	2.0	33-567	RTA30D8CFT18-**-
30	0.188"	8	10'	40	3.4	2.6	2.2	1.7	1.2	33-532	RTA30D8BFT1A-**-
30	0.188"	8	10'	40	3.4	2.6	2.2	1.7	1.2	33-570	RTA30D8CFT1A-**-
30	0.188"	8	12'	40	3.6	2.6	2.3	1.7	1.2	33-571	RTA30D8BFT1C-**-
30	0.188"	8	12'	40	3.6	2.6	2.3	1.7	1.2	33-573	RTA30D8CFT1C-**-
30	0.188"	8	15'	40	2.6	1.7	1.4	1.0	0.6	33-575	RTA30D8CFT1E-**-
35	0.188"	8	8'	40	4.6	3.4	3.2	2.4	2.0	33-853	RTA35D8BFT18-**-
35	0.188"	8	10'	40	3.2	2.4	2.2	1.6	1.2	33-857	RTA35D8BFT1A-**-
35	0.188"	8	15'	40	2.4	1.6	1.4	0.8	0.4	33-899	RTA35D8CFT1E-**-
35	0.219"	8	8'	60	4.5	3.4	3.2	2.4	2.0	33-867	RTA35E8BFT18-**-
35	0.219"	8	10'	40	3.2	2.4	2.2	1.6	1.2	33-906	RTA35E8CFT1A-**-
35	0.250"	8	12'	40	3.4	2.4	2.2	1.6	1.2	33-921	RTA35F8CFT1C-**-
35	0.250"	8	15'	40	2.4	1.6	1.4	0.8	0.4	33-923	RTA35F8CFT1E-**-
40	0.219"	8	8'	40	4.4	3.4	3.0	2.4	1.8	50706-027	RTA40E8BFT18-**-
40	0.219"	8	10'	40	3.2	2.3	2.0	1.6	1.1	50706-031	RTA40E8BFT1A-**-
40	0.219"	8	15'	40	2.3	1.5	1.3	0.8	-	50706-051	RTA40E8CFT1E-**-
40	0.250"	8	8'	60	4.4	3.4	3.0	2.4	1.8	50706-068	RTA40F8CFT18-**-
40	0.250"	8	10'	40	3.2	2.3	2.0	1.6	1.1	50706-072	RTA40F8CFT1A-**-
40	0.250"	8	12'	40	3.2	2.4	2.1	1.5	1.0	50706-075	RTA40F8CFT1C-**-
40	0.250"	8	15'	40	2.3	1.5	1.3	0.8	-	50706-077	RTA40F8CFT1E-**-
40	0.188"	10	15'	40	2.3	1.5	1.3	0.8	-	50706-090	RTA40D1CFT1E-**-
40	0.219"	10	8'	60	4.4	3.4	3.0	2.4	1.8		RTA40E1CFT18-**-
40	0.219"	10	10'	40	3.2	2.3	2.0	1.6	1.1	50706-098	RTA40E1CFT1A-**-
40	0.219"	10	12'	40	3.2	2.4	2.1	1.5	1.0		RTA40E1CFT1C-**-
40	0.219"	10	15'	40	2.3	1.5	1.3	0.8	-	50706-103	RTA40E1CFT1E-**-
45	0.219"	8	15'	40	2.2	1.0	-	-	-		RTA45E8CFT1E-**-
45	0.250"	8	10'	40	3.0	2.2	1.8	0.8	-		RTA45F8CFT1A-**-
45	0.250"	8	15'	40	2.2	1.0	0.6	-	-		RTA45F8CFT1E-**-
45	0.219"	10	10'	40	3.0	2.2	2.0	1.4	1.0		RTA45E1CFT1A-**-
45	0.219"	10	15'	40	2.2	1.4	1.2	0.7	-		RTA45E1CFT1E-**-
45	0.250"	10	10'	40	3.0	2.2	2.0	1.4	1.0		RTA45F1CFT1A-**-
45	0.250"	10	15'	40	2.2	1.4	1.2	0.7	-		RTA45F1CFT1E-**-



Catalog Number System

The catalog number for Hapco poles utilizes the following identification system.



Catalog Number Example -

RTA 30 D 8 B F T 1 A - 01

Round Tapered Aluminum, 30' Mounting Height, .188" Wall Thickness, 8" Butt Diameter, 4.5" Top Diameter, Breakaway T-Base, Truss Arm, Single, 10' Arm Length, Satin Aluminum Finish.

Wall Thickness

- B = .125"
- C = .156"
- D = .188"
- E = .219"
- F = .250"

Butt Diameter

- 7 = 7"
- 8 = 8"
- 1 = 10"

Top Diameter

- B = 4.5"
- C = 6"

Base Style

- F = Breakaway T-Base

Arm Style

- T = Truss

Arm Quantity

- 1 = Single

Arm Length

- 8 = 8'
- A = 10'
- C = 12'
- E = 15'

Finish

- O1 = Satin Aluminum
- BA = Black Powder Coat
- BH = White Powder Coat
- BM = Dark Bronze Powder Coat
- BV = Dark Green Powder Coat
- GC = Gray Powder Coat
- ** = Specify Finish

EPA Notes:

Effective Projected Area (EPA) in square feet. EPA's calculated using wind velocity (mph) indicated in accordance with 2009 AASHTO LTS-5 using a 25 year design life. Maximum EPA is based on the luminaire weight shown. Increased luminaire weight may reduce the maximum EPA. If weight is exceeded, or if other design life or code is required, please consult the factory.